

Siroi Lily

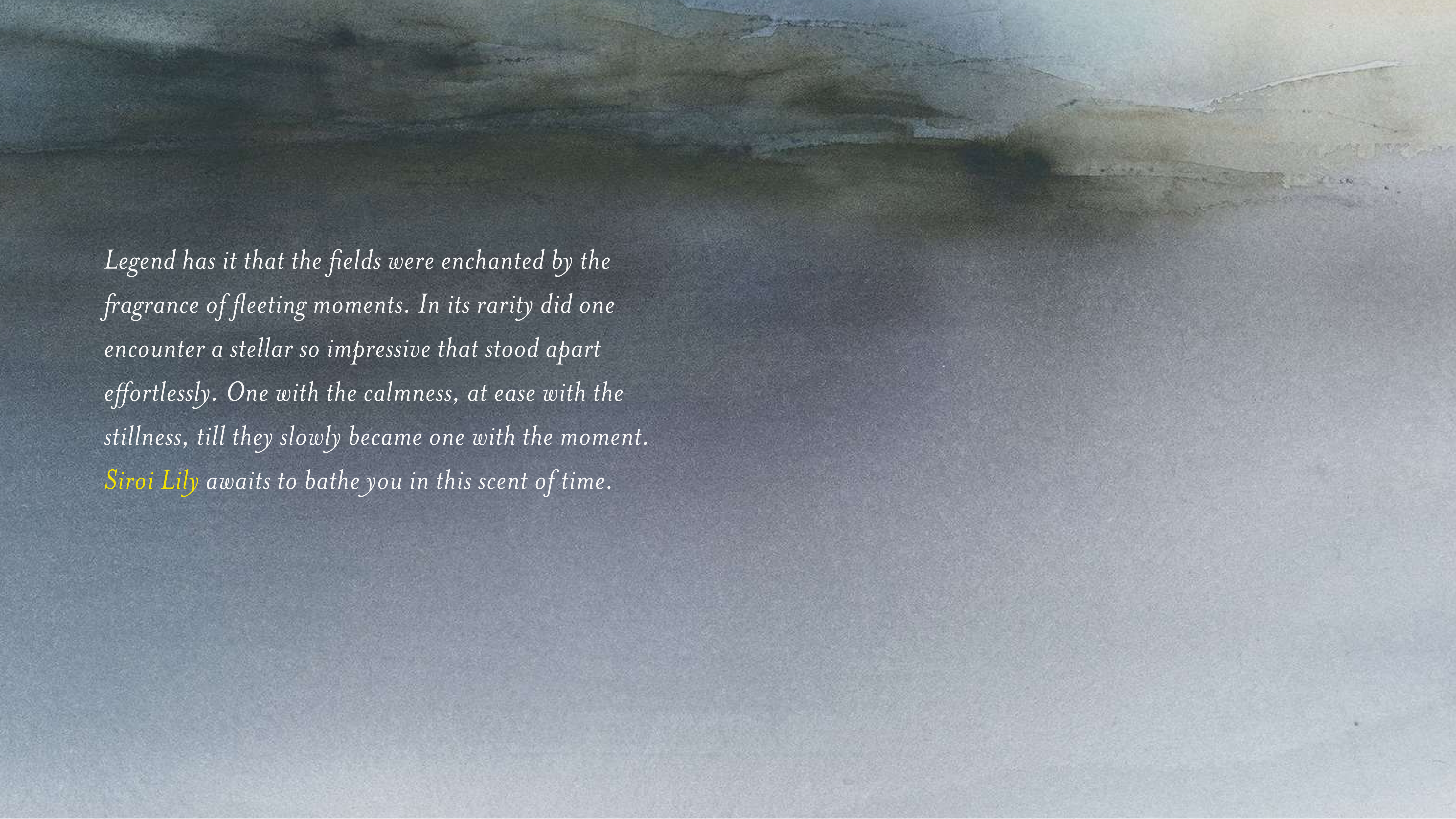
Goa

Scent of Time



Content

1. *Siroi Lily*
2. *A Posie Of Three*
3. *An Ephemeral Feeling*
4. *Signature Facade*
5. *Waterfall & Lily Pond*
6. *Beyond Infinity*
7. *Pergola*
8. *Living Room*
9. *Floating Staircase*
10. *Kitchen And Bar*
11. *Dining*
12. *The Panorama*
13. *Master Bedroom*
14. *Master Bedroom*
15. *Guest Room 1*
16. *Guest Room 2*
17. *Location*
18. *Plans*



*Legend has it that the fields were enchanted by the
fragrance of fleeting moments. In its rarity did one
encounter a stellar so impressive that stood apart
effortlessly. One with the calmness, at ease with the
stillness, till they slowly became one with the moment.*

***Siroi Lily** awaits to bathe you in this scent of time.*



A Posie of Three

Three simplified, classic, effortless abodes that reflect your aesthetic. Detailed and designed to let your verve flow like the unique fragrance of Siroi Lilies. A novel space for you and some rare like-minded ones who have lived and appreciate the natural transience of this scent of time.



An Ephemeral Feeling

The Soulful and simple home tunes into nature by drawing inspiration from it. A living that embraces acceptance for us to be the excellent versions of ourselves. Understanding our uniqueness in this moment of time that we leave our names on . A home that inspires us find our freedom and growth. We welcome you to a life at Siroi Lily.





Signature Facade

Siroi Lily pays a tribute with its facade to the ever grounded trees in the transient nature of its surroundings. Drawing inspiration from the tropical landscape, the facade carries a signature feature that connects you subtly to the oneness of your surroundings.





Waterfall and Lily Pond

The serenity of these evanescent moments is captured beautifully as each inimitable drop of the waterfall merges into the lily pond, symbolising our uniqueness and vanishing nature at the same time.



Beyond Infinity

Lose yourself to find yourself into this illusion of infinity that stretches in front of us. A pool so aesthetic that it draws you in to float weightlessly and ponder over life, an amalgamation of fleeting moments.

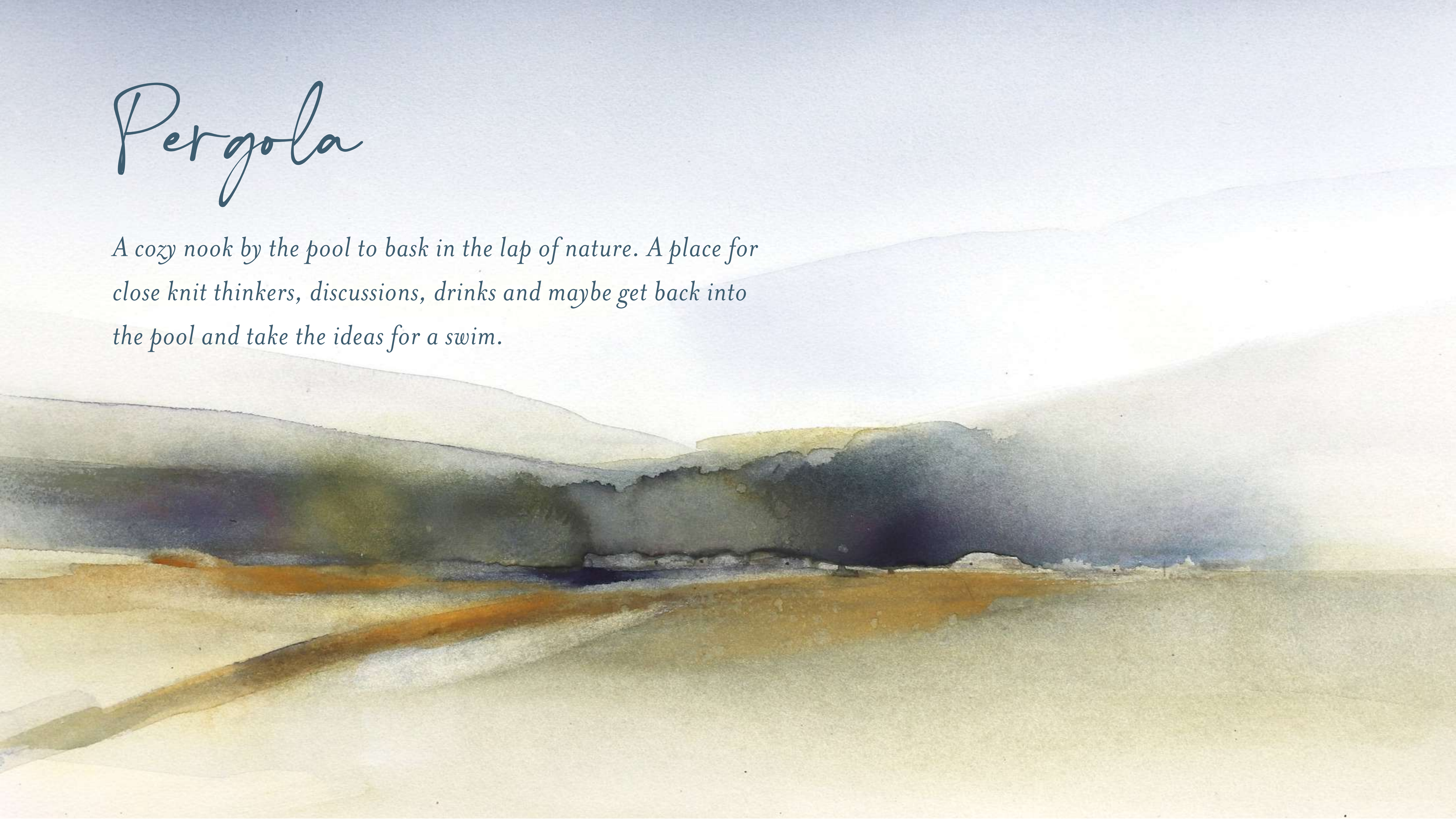
Specs: 122 ft x 47.4 ft





Pergola

A cozy nook by the pool to bask in the lap of nature. A place for close knit thinkers, discussions, drinks and maybe get back into the pool and take the ideas for a swim.





Living Room

Be greeted by an oasis seating as you step into the living area. Interiors not just tastefully designed but corresponding to the earthiness of its surroundings.





Floating Staircase

Attention to detail creating interesting unique features like the Floating Staircase. A topic of discussion in every party, a utilitarian yet marvelous design.



Kitchen & Bar

Lay a dainty spread of the elegant flavours you've gathered from your travels around the world. Let the connoisseur in you pair it with some of the exquisite wines and there you have, a kitchen and bar so inclusive that it matches your personality.



Dining

Regale your inner circle with an intimate dinner or rekindle that flame with the love of your life. A dining that overlooks the pool, makes sure that no dinner is an ordinary one.



The Panorama

While you admire the rice fields from your home, the rice fields enjoys the elusive Panorama view of your house with the pool in the foreground followed by the trio of the kitchen, dining and living in the background, blending in so seamlessly yet so distinguished.





Master Bedroom Level 1

Earthy, understated, luxury with vibes connecting to the depths of the earth, the master bedroom on the Ground Floor overlooks the infinity pool and beyond into the fields. A place to relax and contemplate. A place to unwind and be one with the nature around.





Bath

The luxury of the Master Bedroom continues into the Bath area as you step down into your temperature controlled sunken tub in a thoughtfully designed space.







Master Bedroom Level 2

Overlook the grandeur of nature from the open, nonchalant, luxurious Master Bedroom. An envious view of the fields and the dramatic skies allows the mind to open up and the thoughts to float further possibilities. An ensuite bathroom that lets the green in a minimalist, abstract fashion as you soak up in your bath tub or have a terrace shower.









The background is a soft watercolor illustration of a landscape. It features rolling hills in shades of blue, green, and grey, with a bright, hazy sky in the upper right corner. The overall mood is serene and artistic.

Guest Rooms

The guests are treated in no lesser than your style. The opulence in the earthy simplicity of the interiors, the influx of bright light and the freshness of the breeze blowing from the rice fields is a memory your guests will cherish forever.







Ashvem Beach 


Thalassa Beach 

AntiSocial Goa 


Blue Turtle Beach Bar & Resort

Siroi Lily.

 The Rice Mill


Burger Factory

Uddo Beach 

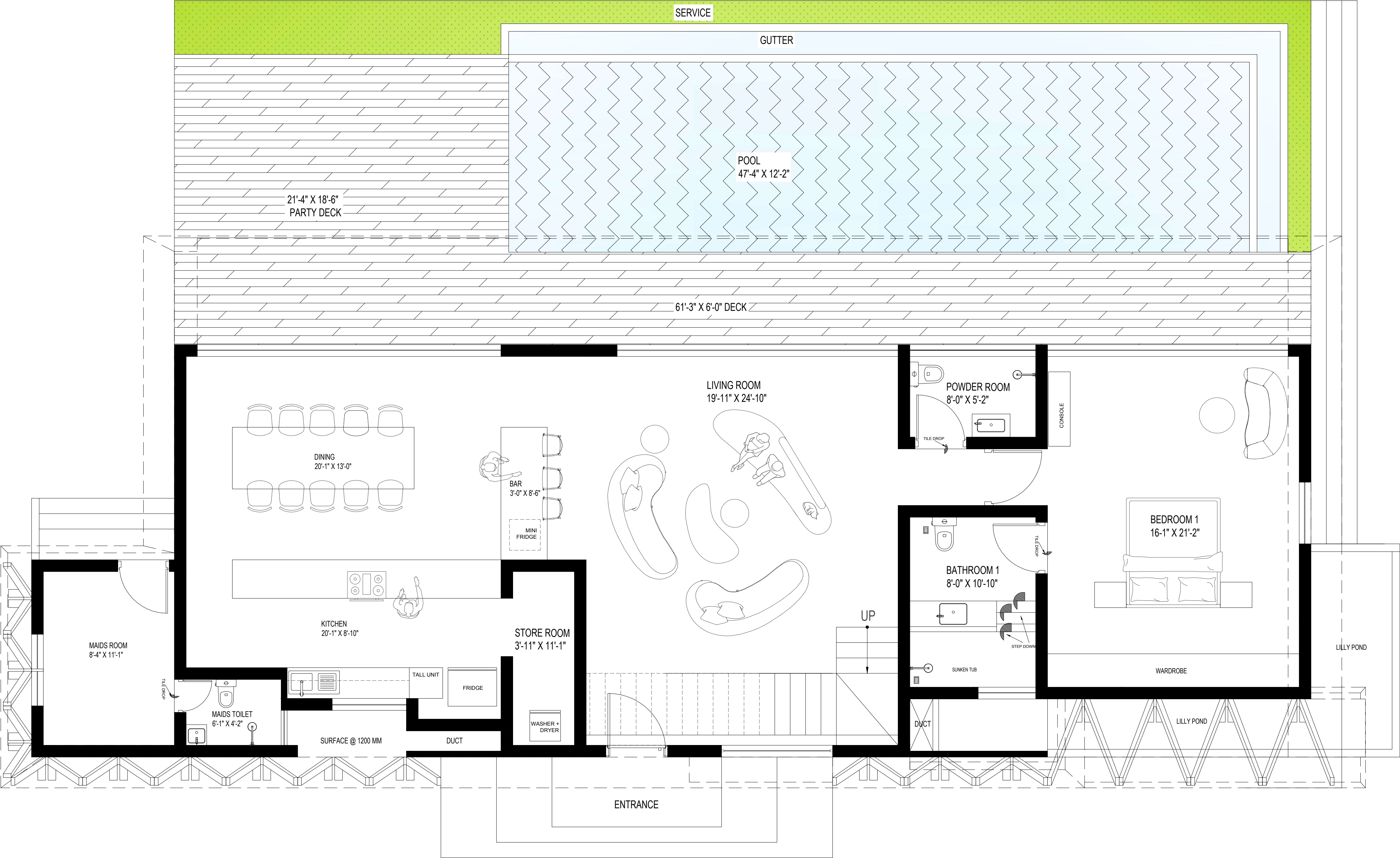

Paris Pao

Morgim Beach 

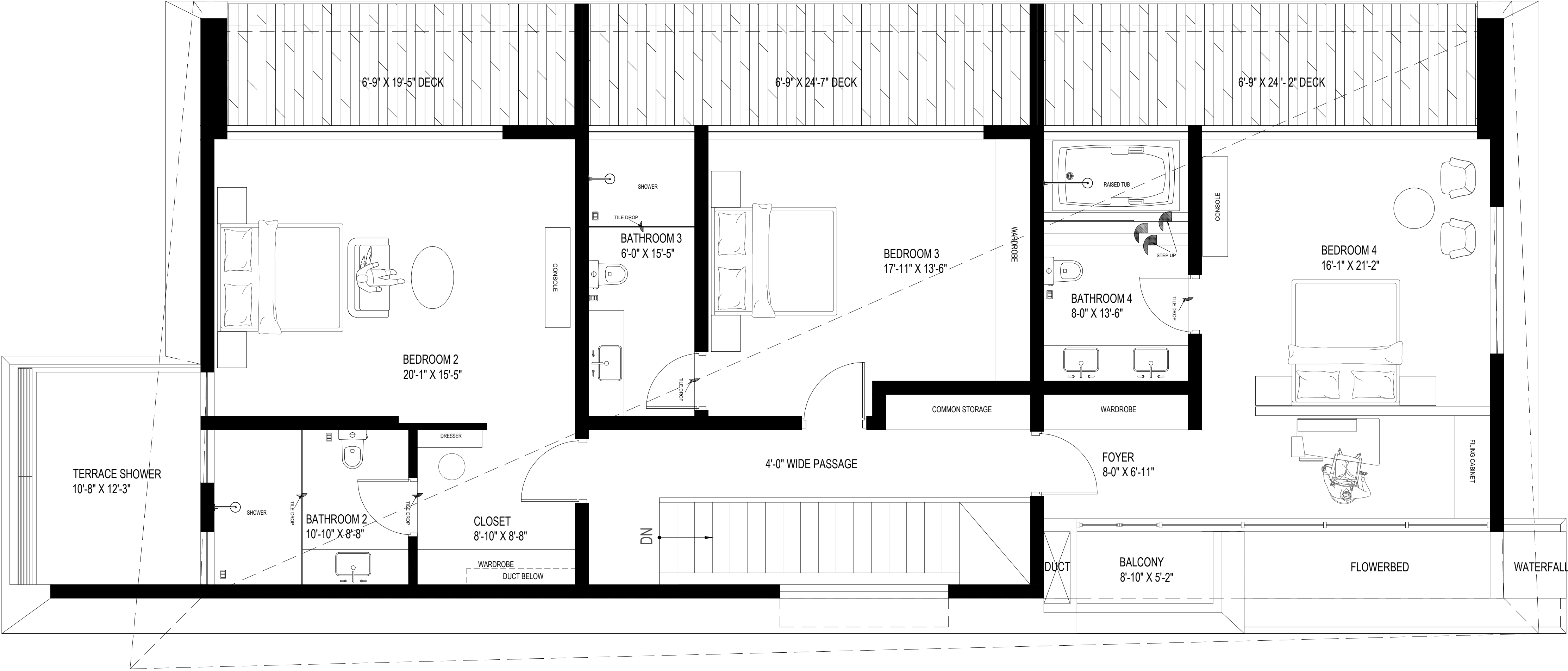
Thalassa   
Rare Republic Hosa

Chapora Fort 

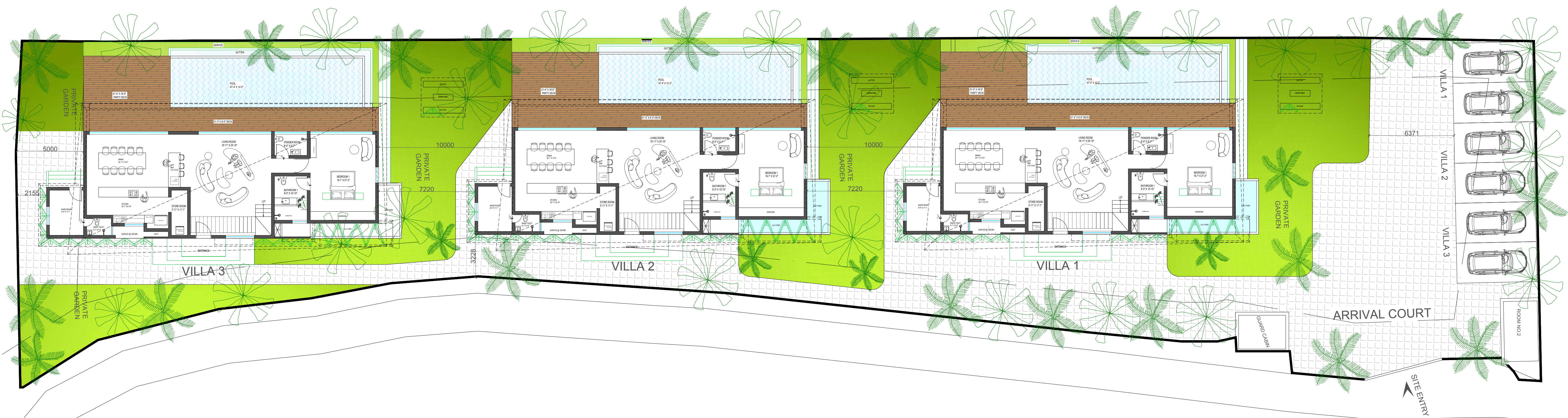
Floor Plans



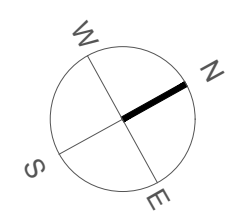
GROUND FLOOR LAYOUT



FIRST FLOOR LAYOUT



MASTERPLAN



Masterplan

<i>Plot</i>	<i>Sq.Mt.</i>
<i>Villa 1</i>	<i>520</i>
<i>Villa 2</i>	<i>520</i>
<i>Villa 3</i>	<i>700</i>
<i>Common Walkway</i>	<i>240</i>
<i>Driveway & Parking</i>	<i>400</i>

Villa Data

<i>Space</i>	<i>Sq.Ft.</i>
<i>Buildup</i>	<i>4,415</i>
<i>Carpet</i>	<i>3,210</i>
<i>Pool</i>	<i>575</i>
<i>Pool Deck</i>	<i>700</i>
<i>Balconies</i>	<i>500</i>
<i>Garden (V1, V2)</i>	<i>1,500</i>
<i>Garden (V3)</i>	<i>2,500</i>

Noteworthy

- *Four Bedrooms: Each with an en-suite bathroom and an additional powder bathroom.*
- *Private Infinity Swimming Pool: 575 sq. ft. of serene luxury.*
- *Four Balconies: 500 sq. ft. total for panoramic views.*
- *Pool Deck: 700 sq. ft. for relaxation and entertaining.*
- *Garden: 1,500 sq. ft. (V1, V2) and 2,500 sq. ft. (V3).*
- *Walkway: Designed for seamless movement.*
- *Parking: Designated space for 2 cars per villa.*

Common Amenities

- *24-Hour Security*
- *24-Hour Power Backup*

Specifications

- *Fully Equipped Modular Kitchen: Top-of-the-line appliances and design.*
- *Windows: Heavy gauge aluminium profiles with clear glass.*
- *Bathrooms: Ceramic and C.P fittings from Kohlär or similar brands.*
- *Bespoke Furniture and Wardrobes: Custom-designed for elegance.*
- *Flooring and Tiles: Imported/double-fired ceramic tiles.*
- *Doors: Flushed doors with Häfele hardware.*
- *Air Conditioning: Daikin VRV system for optimal climate control.*
- *Kitchen Appliances: Siemens or Bosch (fridge, microwave, oven, hob, chimney, washing machine).*
- *Gazebo: Custom-designed for outdoor enjoyment.*

Project Architect and Interior Designer

Mr. Jugal Mistri

JMA Mumbai www.mistriarchitecture.com

Structural Consultant

Mr. Paresh Gaitonde

MEP Consultant

Mr. Ashok Joshi

Joshi Engineering Consultancy

Project Consultant

K B Jain

Branding & Marketing

Changex Creative Labs Pvt Ltd